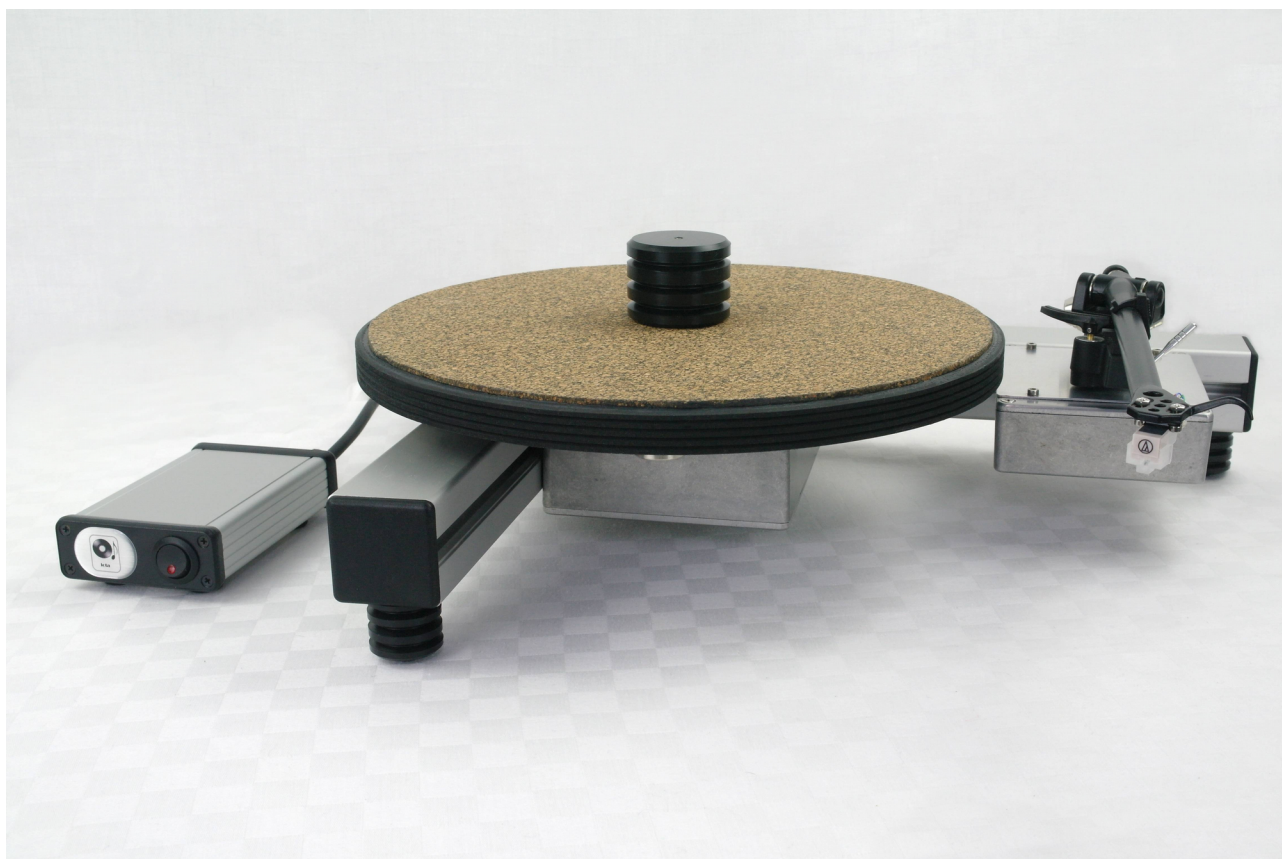


iota QT Turntable

iota QT-Minima.

The **iota QT Minima** is a new entry level free-standing turntable design (without a base board), and it stands on three feet machined from Acetal & with height adjustable anti slip pads. The **QT-Minima** is supplied with a simplified low profile **iota MFP 0.5** mains filter supply: this unit is a tethered supply rather than the usual plug-in user upgradable item, although a future upgrade would be available by returning to the supplying agent.



***iota QT Minima** turntable, silver finish, **Prima** platter, **SD clamp**, **iota MFP 0.5** power supply, & **QT mods** Rega arm.*

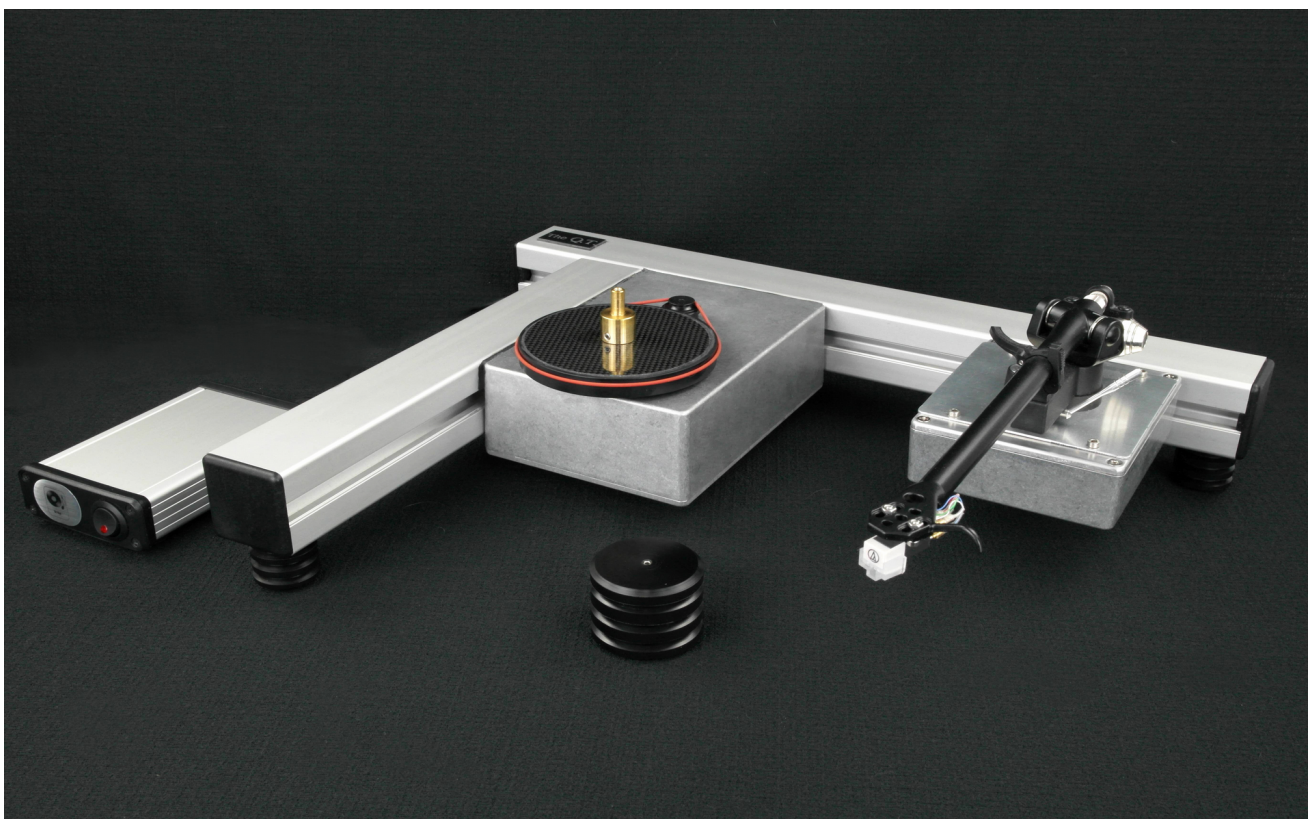
The **iota QT Minima** turntable is available with a choice of two different platters, either the **iota Prima** platter, or a 15mm acrylic platter (see below), while both platters offer a similar mass, each has a different tonal balance and appearance, & both versions also include a new **SD clamp** (100gram) machined from Acetal. The **SD clamp** is our new screw down clamp design and is used in combination with a dedicated brass record spindle.

The **iota QT Minima** turntable is the same basic price with either platter or the standard finish options, and is supplied without tonearm. The main chassis members have a silver anodised finish, and the motor/ bearing module and arm board are offered in either a natural silver finish (see above) or in an alternative textured black finish (see the **iota QT-Quantum** below).



*iota **QT Minima** turntable in silver finish with Acrylic platter & **QT mods** Rega arm.*

All versions of the **QT** are available with a number of arm board options, for various tonearms with different mounts and geometry, i.e. Rega, Linn, and SME, plus custom cut & blank. As the arm board position is user adjustable, the turntable will very easily accommodate any of the above options.



*iota **QT Minima** turntable in silver finish without platter, & **QT mods** Rega arm.*

iota QT-Quantum.

The **iota QT-Quantum** represents the fourth version of this model, and a major upgrade of all the previous models, and as its name suggests, it now includes the new higher mass **Quantum** platter as supplied with the new **iota Jot-Quantum**.

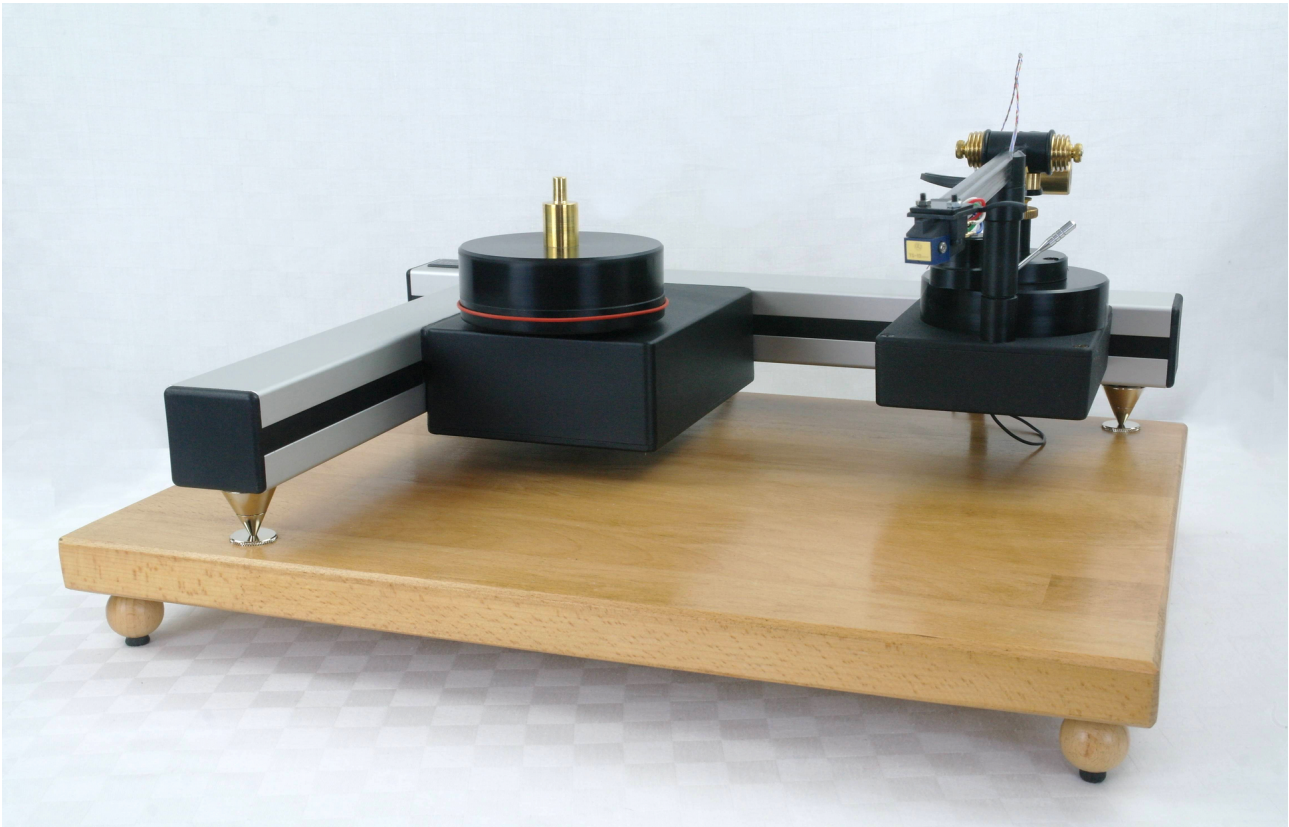


***iota QT-Quantum** turntable in silver & black finish, **iota Satori B** tonearm, & **iota MFP 1** power supply, **iota V-R-S vinyl** record stabiliser, and Solid Beech hardwood base board, in standard finish.*

The **Quantum** platter is similar in appearance to the **Prima** platter and both are developments of our MLM principal of platter design which uses laminations of different materials, and specific polymer damping & bonding agents, to achieve an inert platter structure.

However, unlike the **Prima** platter, the new **Quantum** platter has increased mass and is a larger structure at 2.46KG, & 40mm in section. The platter is faced with a fixed & bonded cork-Nitrile rubber composite, and around its circumference with ribbed external vibration control bands. Also enclosed & incorporated within the composition of the platter is additional peripheral mass close to the outer edge, providing greater pitch & speed stability, with an open & neutral sonic performance.

Also included with this turntable is the **iota V-R-S** vinyl record stabiliser, this is CNC machined from 304 stainless steel billet, at 800 grams, and is faced with a constrained layer of carbon fibre and damping material. (This item is also available separately for use with other manufacturers turntables).



***Iota QT-Quantum** turntable without platter, silver & black finish, and **Iota Satori B** tonearm, and Solid Beech hardwood base board, in standard finish.*

The QT-Quantum turntable now also has an elevated arm board and sub platter, these are constructed from Acetal, carbon fibre, and other materials that minimise the transmission of vibration. The turntable belt is a Silicon-Nitrile compound, chosen for its obvious sonic advantages.

The high quality, low noise, 24 pole AC synchronous motor and enhanced thrust bearing are contained within the motor / bearing module. The **QT-Quantum** is supplied as standard with the **Iota MFP1** mains filter power supply which may be upgraded to the **Iota T/T-2 speed psu**, this offers exceptional accuracy & speed control by direct digital synthesis, and the convenience of speed change at the flick of a switch.

The QT-Quantum turntable standard finish options are a silver anodised finish for the main chassis members, and the motor/ bearing module and arm board in either a natural silver finish, or in a textured black finish. The turntable is supplied with a sustainable hardwood base board with height adjustable feet and anti-slip pads, and at no additional cost this is also available in satin black & gunmetal grey, or other finishes.... P.O.A.

The QT-Quantum punches well above its weight in terms of performance, with an even-handed tonal balance, a wide deep sound stage, and excellent information retrieval. With ease of adjustment and fine tuning, its able to carry just about any standard tonearm at any elected geometry, it also offers a high degree of environmental isolation so is easy to position and site. The **QT Minima** provides an entry level version of its sibling, with an easy and well-defined upgrade path if desired.